

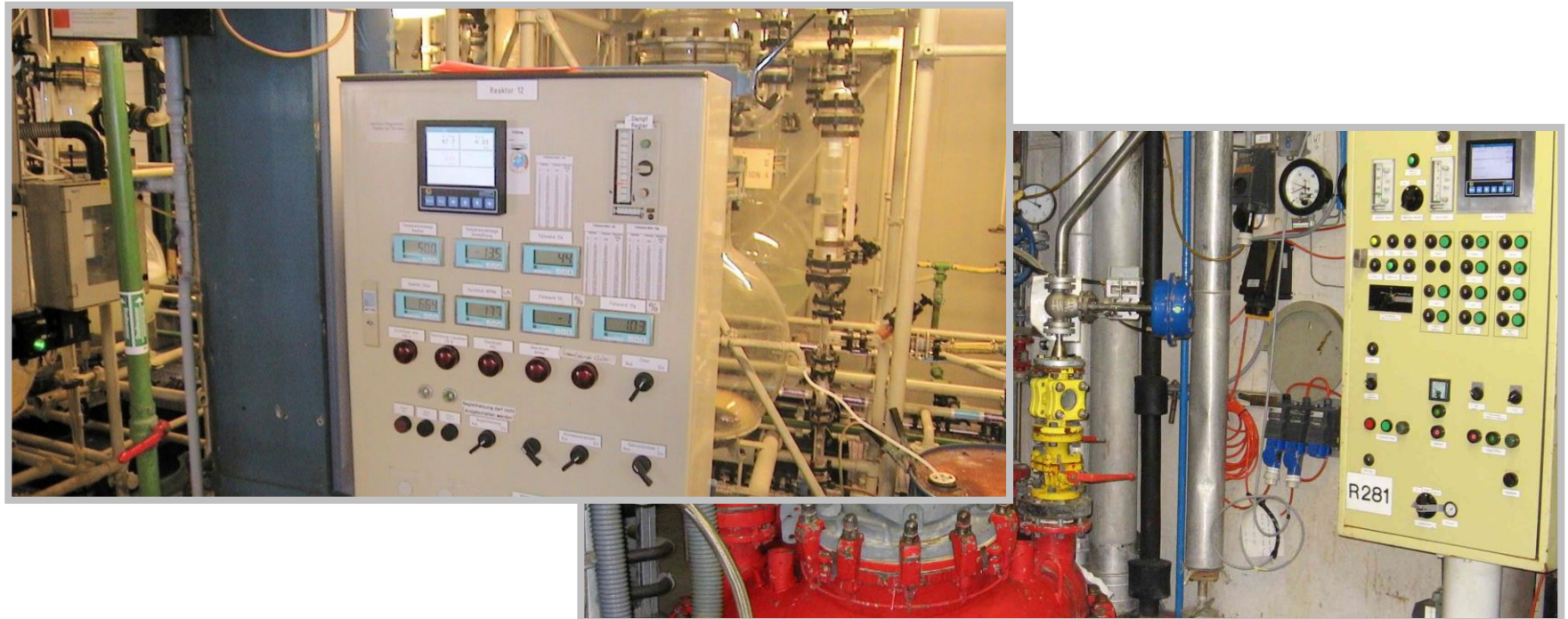
Exi chart recorder ExTrend 200i



Trend indication local in Ex Zone 1

The intrinsically safe recorder ExTrend 200i is used for the trend indication of process data at local control panels in the hazardous area.

Via the Modbus interface it's possible to transmit the actual process to a DCS or to other the real time data storage systems.



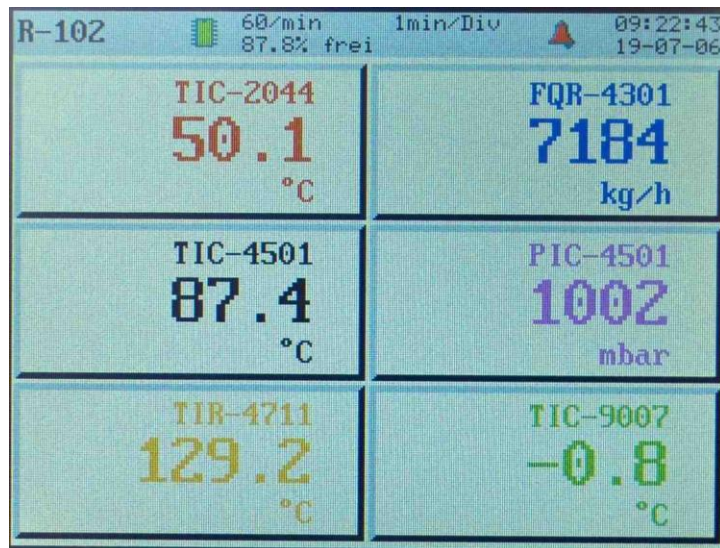
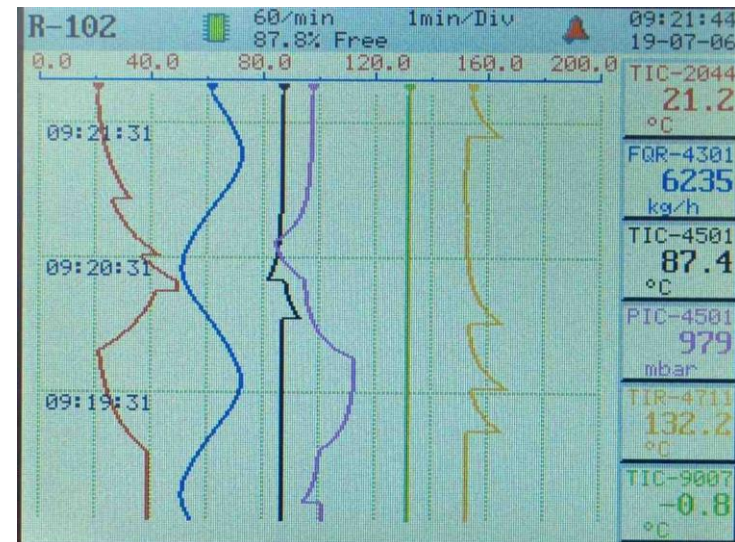
Technical data:

- Ex- approval: ATEX II 2G EEx ia/ib IIC T4
- Backlighted TFT LCD display with 115,2 x 86,4 mm and a ¼ VGA resolution
- With the 1 GByte memory and storage rate of 1 value per second it's possible to record more then 10 weeks.
- Power supply with the IPM 300i module
- In a 3- or 6-channel version it's possible to work with the following signals:
 - 4-20 mA, passive
 - Pt100 in 3- wire connection
 - Modbus interface
- 6 digital outputs, passive, voltage free for alarm outputs
- 6 digital inputs, for the connection of passive contacts
- Intrinsically safe RS485 MODBUS interface for data communication
- Housing: 144 x 144 x 115 mm (w x h x d)
- IP rating front: IP65

Intelligent Batch Solutions.....designed for you

Indication:

- Chart recorder indication
- Bargraph indication
- Indication of digital values
- Alarm and batch lists
- Log file lists



Batch traceability / input of batch numbers

In the pharmaceutical industries it is very important to have a tractability batch production of the product. It's not allowed that the data can be modified later on. All programming changes at the recorder have to be stored in a log file. Before the change a parameter or the start/stop of a batch, the user has to enter his authorization code.

User authorization management:

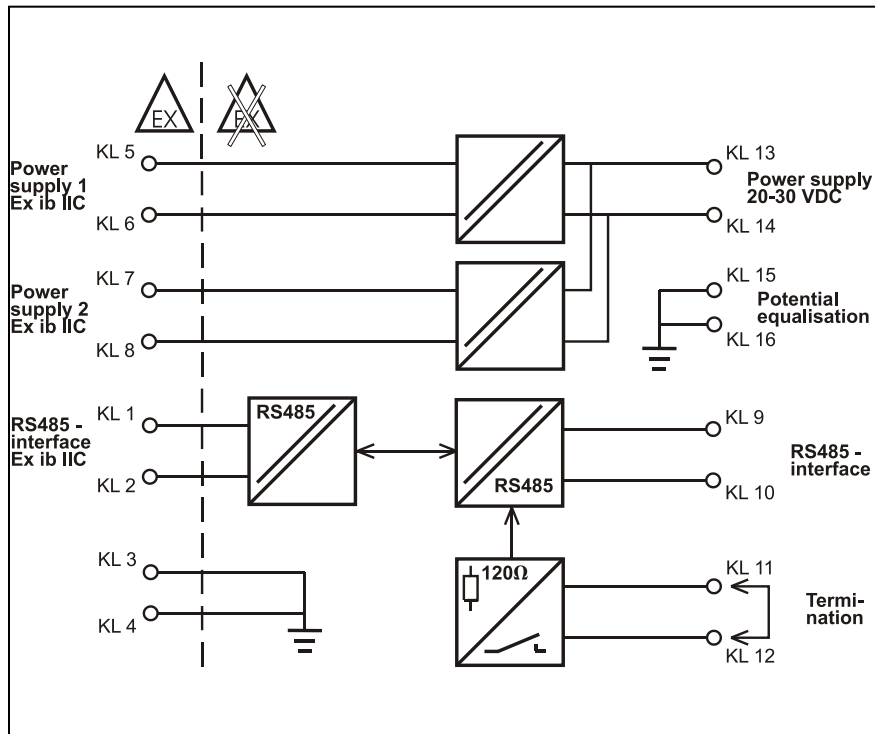
- Up to 30 users
- Log in via a code and user name
- Different authorization levels

The following actions are stored in the log file:

- Parameter changes
- Alarm status changes
- Batch start/stop
- Status changes of the digital inputs

IPM 300i module

Exi- power supply module and data interface
for the ExTrend 200i



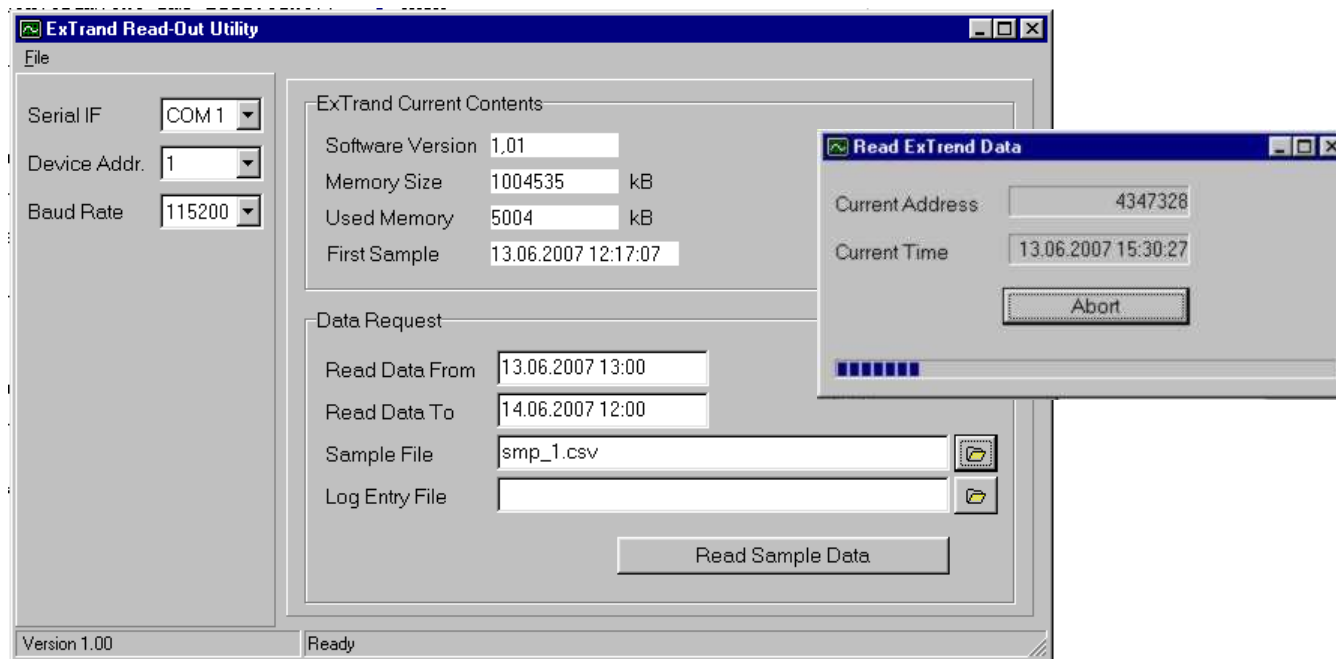
Function:

The data interface isolates the special intrinsically safe RS 485 interface to the ExTrend 200i to a normal RS 485 at the non-Ex side.

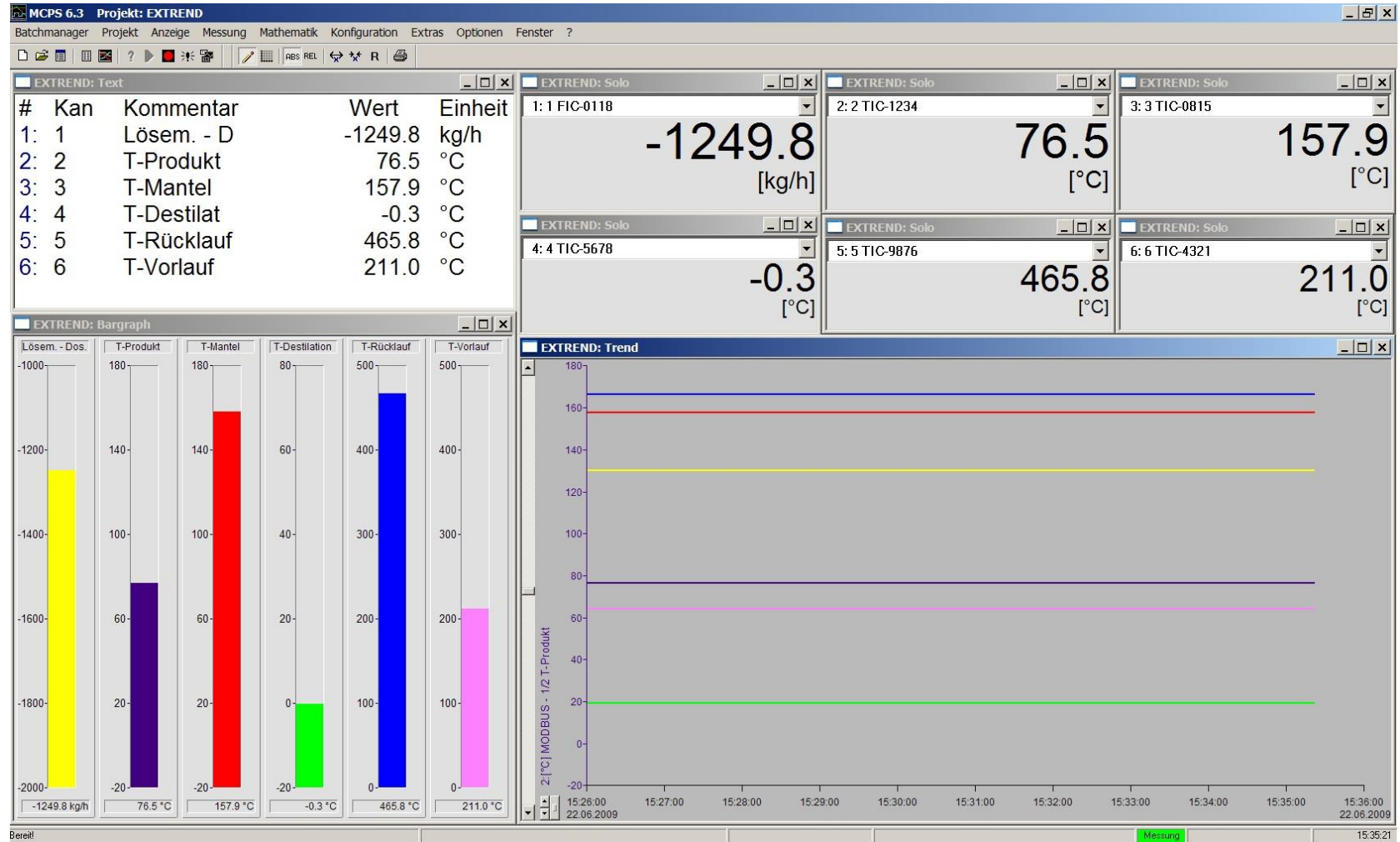
The IPM 300i also provides two intrinsically safe power supplies for the ExTrend 200i
For mounting on a DIN rail in the safe area
ATEX II 2G [Ex ib] IIC

Windows software for reading stored data

IBS BatchControl provides a simple software for readout of stored data from the Extrend 200i. The IBS Software stores the process data and also the log file entries in two separate CSV-files. This CSV files can be handled by ECXEL or any other standard Windows software.

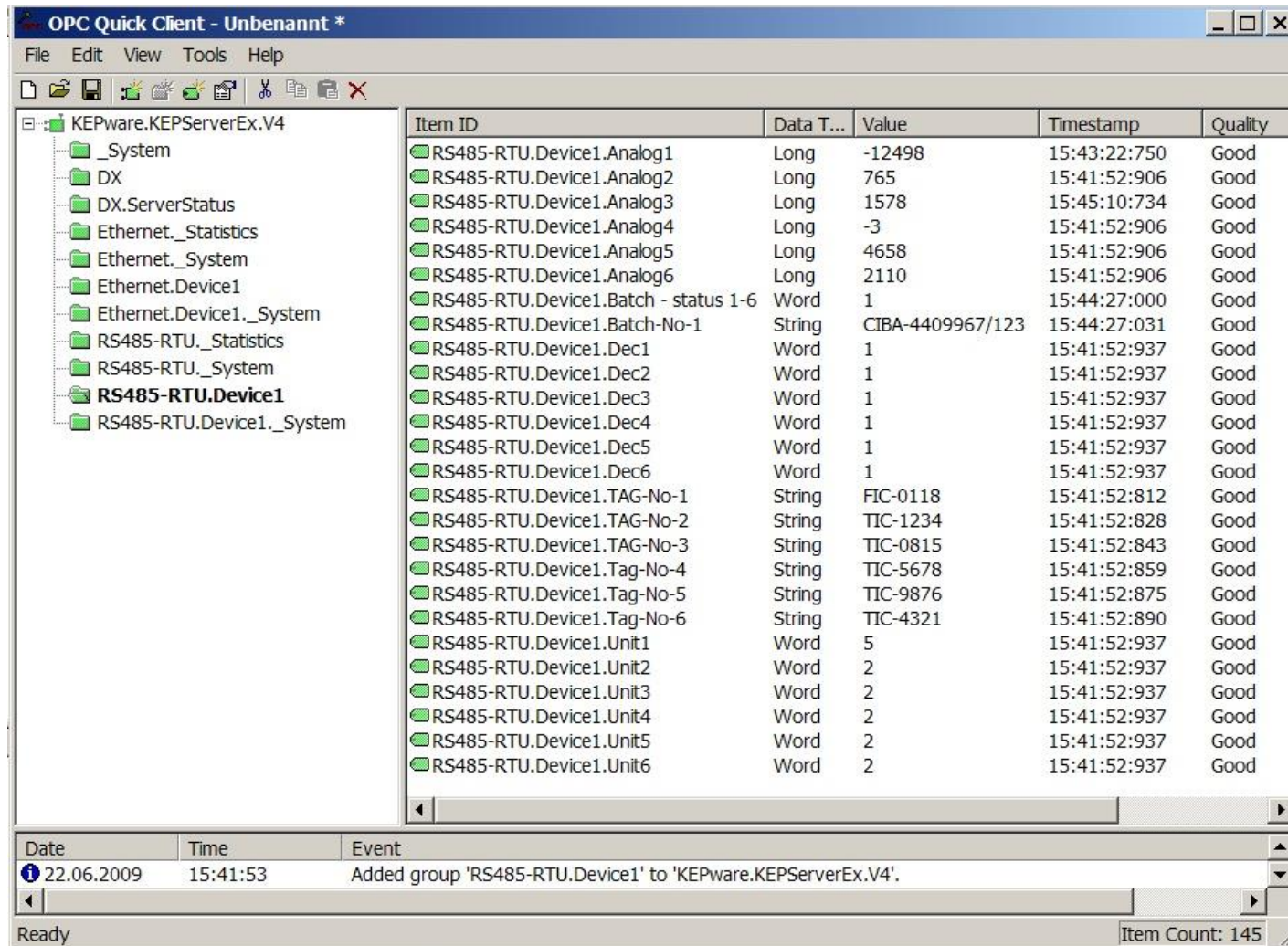


Example: Software connection to the data acquisition system MCPS



Intelligent Batch Solutions.....designed for you

Example: Software connection to the OPC Server KEPServer Ex

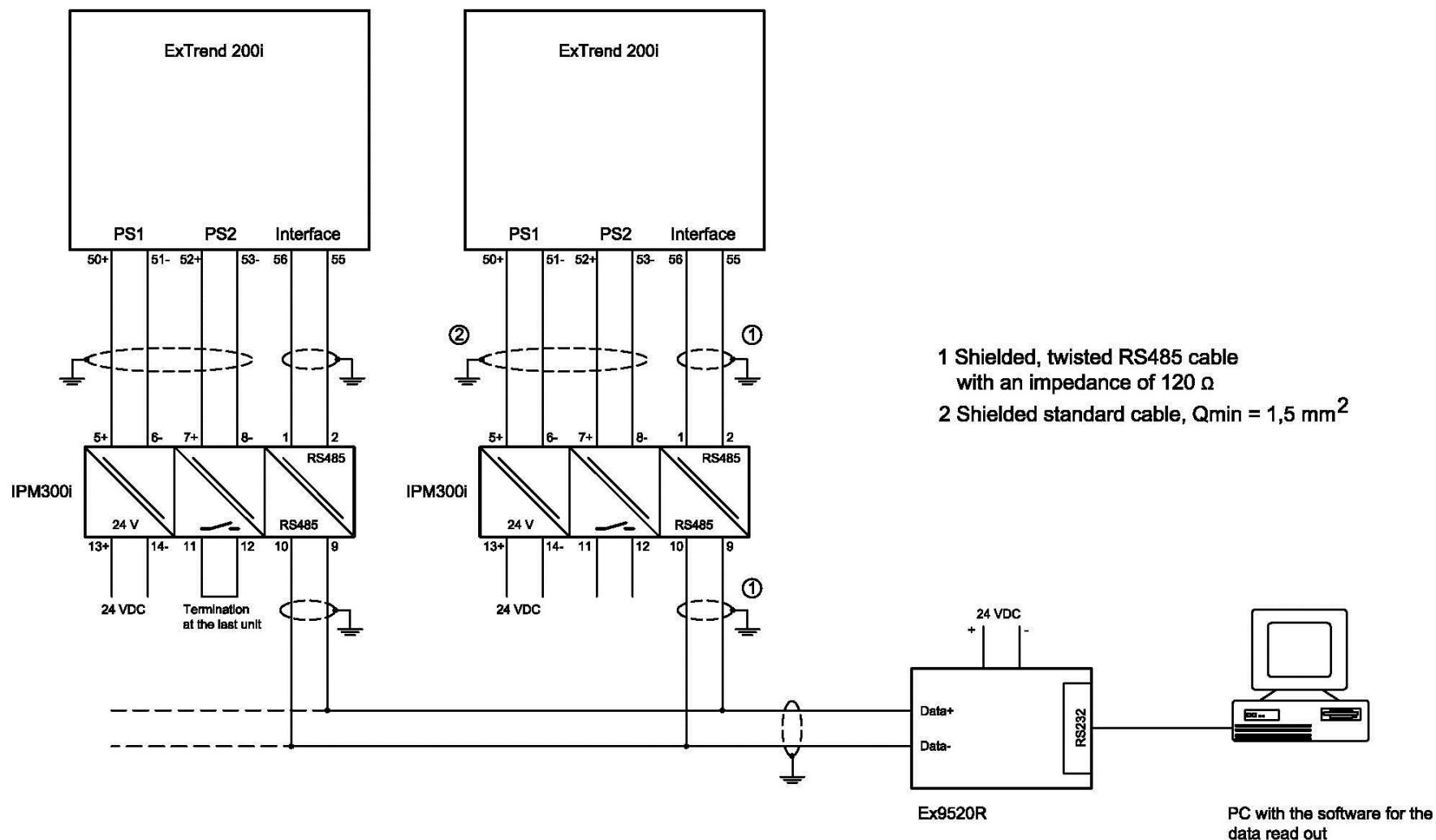


The screenshot displays the OPC Quick Client interface, titled "OPC Quick Client - Unbenannt *". The left pane shows a tree view of the "KEPware.KEPServerEx.V4" hierarchy, including folders like "_System", "DX", "Ethernet._Statistics", "Ethernet._System", "Ethernet.Device1", "Ethernet.Device1._System", "RS485-RTU._Statistics", "RS485-RTU._System", "RS485-RTU.Device1", and "RS485-RTU.Device1._System". The right pane shows a table of data points:

Item ID	Data T...	Value	Timestamp	Quality
RS485-RTU.Device1.Analog1	Long	-12498	15:43:22:750	Good
RS485-RTU.Device1.Analog2	Long	765	15:41:52:906	Good
RS485-RTU.Device1.Analog3	Long	1578	15:45:10:734	Good
RS485-RTU.Device1.Analog4	Long	-3	15:41:52:906	Good
RS485-RTU.Device1.Analog5	Long	4658	15:41:52:906	Good
RS485-RTU.Device1.Analog6	Long	2110	15:41:52:906	Good
RS485-RTU.Device1.Batch - status 1-6	Word	1	15:44:27:000	Good
RS485-RTU.Device1.Batch-No-1	String	CIBA-4409967/123	15:44:27:031	Good
RS485-RTU.Device1.Dec1	Word	1	15:41:52:937	Good
RS485-RTU.Device1.Dec2	Word	1	15:41:52:937	Good
RS485-RTU.Device1.Dec3	Word	1	15:41:52:937	Good
RS485-RTU.Device1.Dec4	Word	1	15:41:52:937	Good
RS485-RTU.Device1.Dec5	Word	1	15:41:52:937	Good
RS485-RTU.Device1.Dec6	Word	1	15:41:52:937	Good
RS485-RTU.Device1.TAG-No-1	String	FIC-0118	15:41:52:812	Good
RS485-RTU.Device1.TAG-No-2	String	TIC-1234	15:41:52:828	Good
RS485-RTU.Device1.TAG-No-3	String	TIC-0815	15:41:52:843	Good
RS485-RTU.Device1.Tag-No-4	String	TIC-5678	15:41:52:859	Good
RS485-RTU.Device1.Tag-No-5	String	TIC-9876	15:41:52:875	Good
RS485-RTU.Device1.Tag-No-6	String	TIC-4321	15:41:52:890	Good
RS485-RTU.Device1.Unit1	Word	5	15:41:52:937	Good
RS485-RTU.Device1.Unit2	Word	2	15:41:52:937	Good
RS485-RTU.Device1.Unit3	Word	2	15:41:52:937	Good
RS485-RTU.Device1.Unit4	Word	2	15:41:52:937	Good
RS485-RTU.Device1.Unit5	Word	2	15:41:52:937	Good
RS485-RTU.Device1.Unit6	Word	2	15:41:52:937	Good

The bottom status bar shows the date "22.06.2009", time "15:41:53", and event "Added group 'RS485-RTU.Device1' to 'KEPware.KEPServerEx.V4'". The status is "Ready" and the item count is "145".

Connection diagram of the ExTrend 200i to a PC



Some of our Main Clients:

3M, France, Germany

Abbot, Germany, USA

Air Liquide, Germany, France

Aker Kvaerner, The Netherlands

Akzo Nobel, China, The Netherlands, Germany

Angobetumes, Angola

Arkema, Germany, France

Astra Zeneca, England

Arvand Petrochemical Company, Iran

BASF, Belgium, Mexico, China, Germany

Bayer, Malaysia, Spain, Vietnam, Germany

Basell, Germany

British American Tobacco, Germany

Butagaz, France

Clariant, Greece, Switzerland, Germany

Ciba, Italy, France, Switzerland, Germany

Christ Water Technology, Germany

Cognis, Germany

Degussa, Belgium, Germany

Dupont, Germany

DSM, The Netherlands, Austria, Germany

Endress + Hauser, Worldwide

Exxon, France, The Netherlands

GlaxoSmithKline, England, Italy

Kraus Global, Kanada und Korea

KANEX, Russia, Ukraine

Krohne Messtechnik, Worldwide

Lanxess, Germany

Linde, Germany

Lukoil, Ukraine

Lurgi, Germany

Merck, Germany

Novartis, Switzerland, Germany

Oiltanking, Belgium

Oval Asia, Singapore

Petroleos de Venezuela, Cuba

Petrobras, Brazil

Rhodia, France, Germany

Roche, Switzerland, Germany

Sanofi-Aventis, Germany, France

Sipchem, Saudi Arabia

Shell, Germany

Symrise, Germany

Tecnicas Reunidas, Spain

Total, France

Toyo Engineering, Japan

Uhde, Germany, China, India, Egypt, Ukraine

Vopak Banyan Terminals, Singapore

Wacker Chemie, China, India, Germany

Intelligent Batch Solutions.....designed for you



Exi-Indicators



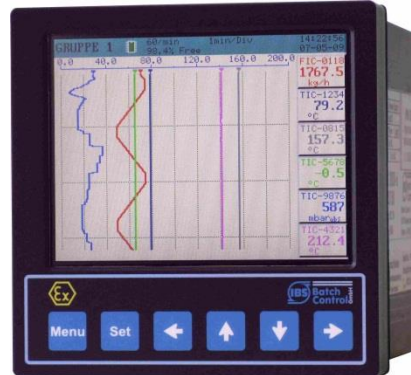
Exi-Controllers



Batch- Controllers



Exi-Interfaces



Exi-Recorders



IBS BatchControl GmbH
Im Sträßchen 2-4
53925 Kall /Germany
Tel.: +49 2441 9199 801
Sales@ibs-batchcontrol.de
www.ibs-batchcontrol.de



Flow- Computer