

Printer Communication Controller

PCC 400

**Batching Master
Pipeline Master**



Installation and User Manual

Software version BM.00.01.00 / 00.03.01

Software version PM.00.01.00 / 00.01.01

Revision 9
20.07.2011

Construction Year see type plate

IBS BatchControl GmbH
Marie-Curie-Str. 8
50170 Kerpen
Germany



Tel.: +49 (0) 22 73 / 60 37 0
Fax.: +49 (0) 22 73 / 60 37 22
www.ibs-batchcontrol.de

Safety information



The PCC 400 must only be installed by process electronics engineers or qualified electricians who are authorised by the plant operator to carry out these tasks.

The instrument may only be operated by personnel who are authorised and trained by the plant operator.

The PCC 400 must only be connected as specified in the electrical data. The upper part of the housing must not be opened, otherwise maintenance of the electrical data is not ensured and the guarantee becomes null and void.

Validity of Installation and Operating Instructions

- These Installation and Operating Instructions apply to all PCC 400 models.
- It is only delivered the version PCC 400 Batching Master or PCC 400 Pipeline Master. Batching Master and Pipeline Master can not work simultaneously on one PCC 400.
- Your IBS agent will be able to give you information about any improvements or modifications.
- The manufacturer is not responsible for damage caused by incorrect or unauthorised use. Conversions and changes to the instrument must not be made, otherwise the certification and guarantee become invalid.

Operating safety

- The PCC 400 satisfies the requirements of protection class IP20.
- Danger may occur if the instrument is used incorrectly or in an unauthorised manner. All the information in this manual must be rigorously observed.

Technical Developments

The manufacturer reserves the right to modify technical data without notice.

Repairs, dangerous chemicals

Only the **IBS BatchControl GmbH** is allowed to repair the instruments. Instruments sent to **IBS BatchControl GmbH** for repair must always be accompanied by a note describing the fault.



Warning!

The following procedures must be carried out before an instrument is sent in for repair:

- Remove all residues and deposits that may be present. Pay special attention to the gasket grooves and crevices where residue may collect.
- If materials injurious to health are not completely removed to the highest levels of safety, we cannot accept an instrument for repair.
- Costs of disposal of materials or of injury to personnel (acid burns, etc.) arising because of defective cleaning of the equipment will be charged to the owner of the equipment.

Contents

1	System description.....	5
1.1	Area of application.....	5
2	Assembling and Installation.....	6
2.1	View.....	6
2.2	Protection Class IP20.....	6
2.3	Temperature area and relative humidity.....	6
2.4	Dimensions and mounting brackets.....	6
2.5	Instruction for installation.....	8
2.6	Custody transfer block diagram.....	9
2.7	Monitor interface.....	10
2.7.1	Monitor adapter for operating without a monitor.....	10
2.7.2	Operating with a monitor without a DVI connector.....	10
2.8	Keyboard and Mouse interface.....	10
2.9	Dongle.....	10
2.10	Connection the Power.....	10
2.11	Serial COM ports.....	11
2.12	ON/OFF-key.....	11
2.13	Displaying Power ON.....	11
2.14	Connect the Printer.....	11
2.15	Connect the Batching Master / Pipeline Master.....	12
2.16	Connect to supervisory system.....	12
3	Starting up PCC-Batching Master.....	13
3.1	Printout at restart from PCC.....	13
3.2	PCC 400 settings.....	14
3.3	Global settings.....	16
3.3.1	TAG settings.....	16
3.3.2	System settings.....	17
3.3.3	Batching Master interface settings.....	17
3.3.4	Printer settings.....	18
3.3.5	Modbus slave settings (option).....	18
3.3.6	Terminal mode (Option).....	19
3.3.7	Product selection (option).....	19
3.3.8	Storing of the batch report as a copy into a PDF file.....	20
3.3.9	MySQL data base connection.....	20
3.3.10	Password.....	21
3.3.11	Language.....	21
3.3.12	Logfile.....	21
4	Starting Up PCC-Pipeline Master.....	22
4.1	Printout at restart from PCC.....	22
4.2	PCC 400 Settings.....	23
4.3	Global Settings.....	25
4.3.1	TAG settings.....	25
4.3.2	System Settings.....	27
4.3.3	Pipeline Master Interface Settings.....	27
4.3.4	Printer Settings.....	27

4.3.5 Modbus slave settings (option).....	28
4.3.6 Modbus slave mapping (option).....	28
4.3.7 Write PDF files.....	28
4.3.8 Password.....	29
4.3.10 Language.....	29
5 Handling PCC Batching Master.....	30
5.1 Stored Printouts.....	30
5.1.1 Show printouts.....	30
5.1.2 Data base.....	31
5.2 Info menu.....	32
5.2.1 PCC 400 Info.....	32
5.2.2 Print BM Info.....	32
6 Handling PCC Pipeline Master.....	33
6.1 Stored data.....	33
6.1.1 Show printouts.....	33
6.1.2 Data base.....	34
6.2 Info menu.....	35
6.2.1 PCC 400 Info.....	35
6.2.2 Print PM Info.....	35
7 Declaration of Conformity.....	36

1 System description

The PCC 400 is a compact fan less industrial PC. The self-acting software monitored the Batching Master and one printer. Other housings (e. g. standard housing, 19"...) and configurations are possible. Every used PC needs three serial RS 232 interfaces.

1.1 Area of application

The PCC 400 monitored all connected Batching Master or Pipeline Master and print the original document after ending the batch or by Pipeline Master Version on request or periodical at the custody transfer printer. Following data are printed:

- text before custody transfer data print out
- station name
- sequential number
- date and time batch start or start time
- date and time batch end or end time
- preselected value (not for Pipeline Master)
- batched value or mass
- text at the end
- error messages during the batch or the documented time

The PCC 400 is a Modbus RTU Master. The Batching Master / Pipeline Master are connected by a RS232 to RS485 converter to the PCC 400. Intrinsically safe Batching Master need additional a IPC 300 i for safety isolation.

The PCC 400 is complete ready for use. The flash memory with the program is inside the housing mounted in the factory. The software and settings are described in the following articles. Only Batching Master or Pipeline Master can be connected. A composite use is not possible.

Connection from mouse, keyboard and monitor (DVI) are recommended.

Power Supply: 24 VDC with a provided 100 VAC – 240 VAC adapter (see 2.11). Standard-PC and 19"-PC need 230VAC.

2 Assembling and Installation

Receive attention this chapter for fitting and installation.

2.1 View



2.2 Protection Class IP20

The PCC 400 is build in protection class IP20.

2.3 Temperature area and relative humidity

The PCC 499 may be used between 0°C to +40°C. The relative humidity may be between 10% and 93%.

2.4 Dimensions and mounting brackets

The PCC 400 is delivered in a housing (IP20) with the dimensions of 135 mm x 220 mm x 43 mm. For exact dimensions and holes see the drawing. If wanted, other housings (standard PC, 19") are possible.





For fixing, additional brackets could be mounted at the enclosure.

Please remove the four marked screws.



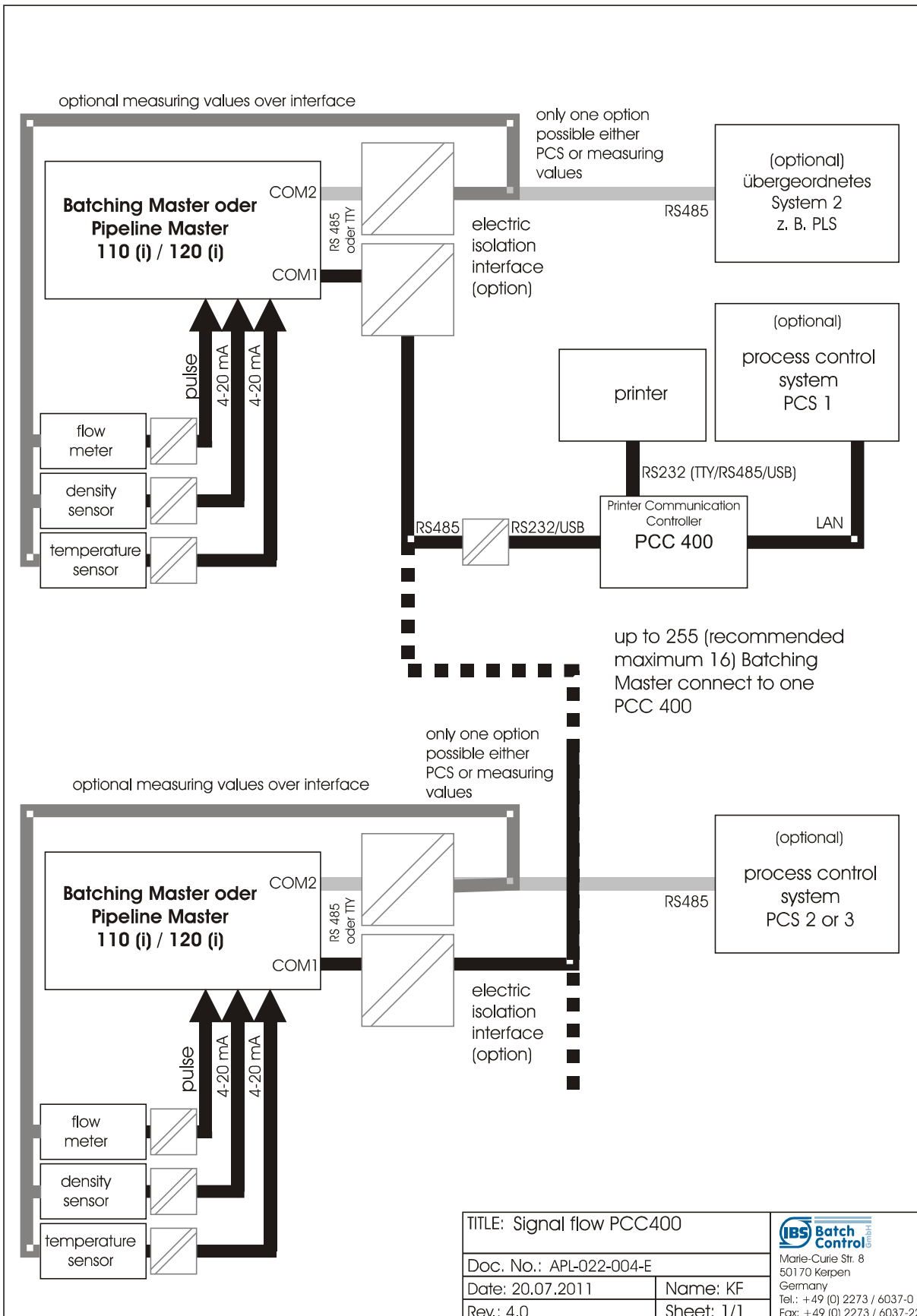
The brackets are mounted with the same screws.



2.5 Instruction for installation

Only shielded cables may be used. The shield is to mount extensive to a shield clamping bracket. The connector housing may be fixed with screws to the PCC 400.

2.6 Custody transfer block diagram





2.7 Monitor interface

For configuration connect a standard monitor with DVI to the DVI connector.

2.7.1 Monitor adapter for operating without a monitor



If the PCC should operate without a monitor, you must fit the monitor adapter with the termination plug into the DVI connector. Without Monitor or Monitor termination plug the PCC 400 do not start.

2.7.2 Operating with a monitor without a DVI connector

If you want to use a monitor without DVI connector, please use the adapter from DVI to 15 pin Sub-D from the monitor adapter. We recommend to use a DVI-Monitor.

2.8 Keyboard and Mouse interface

Standard keyboard and mouse are plugged to the USB connection.

2.9 Dongle



After configuration connect the dongle to COM 2. The metrological relevant data are fixed and cannot be manipulated. The dongle is sealed by the calibration officials.

2.10 Connection the Power

Power is supplied through an external AC (100 – 240 V) / DC power adapter.



2.11 Serial COM ports



Four serial RS232 COM ports (COM 1 bis COM 4) are available. The DB9 is standard serial port connector. This connectors are used for connect the printer (COM 3) and the Batching Master (COM1). The Dongle is connected to COM 2 near the DVI connection.

2.12 ON/OFF-key

This key switches the PCC 300 ON (green lamp is on) or OFF. Press this key for a longer time the PCC 400 is shut off. Please switch the PCC 400 on first after all cables are fitted correct and screwed.

2.13 Displaying Power ON

In the ON / OFF key is a signalisation ON / OFF with a green lamp. This changes to red if the Solid State Disk is used.

2.14 Connect the Printer

The Printer is connected to COM3. The maximum cable length is 5 m for RS232. For TTY or RS422 the cable length is up to 1000m. A converter from RS232 to TTY or RS422 is needed. The printer cable RS232 with 5 m is included in delivery.

The printer needs following settings:

Serial Data:	8 bit
Protocol:	Ready/Busy
Parity check:	YES
Parity selection:	EVEN
DSR Signal:	VALID
DTR Signal:	Ready on Power Up
Baud rate:	9600 BPS (also 1200, 2400, 19200, 38400 BPS)

2.15 Connect the Batching Master / Pipeline Master

The Batching Master / Pipeline Master are connected to COM1. A cable set with RS232 to RS485 converter is included in delivery.

If intrinsically safe Batching Master / Pipeline Master 110 i / 210 i are used, isolation card IPC 300 i may be strictly required. The IPC 300i is *not* included in delivery.

2.16 Connect to supervisory system

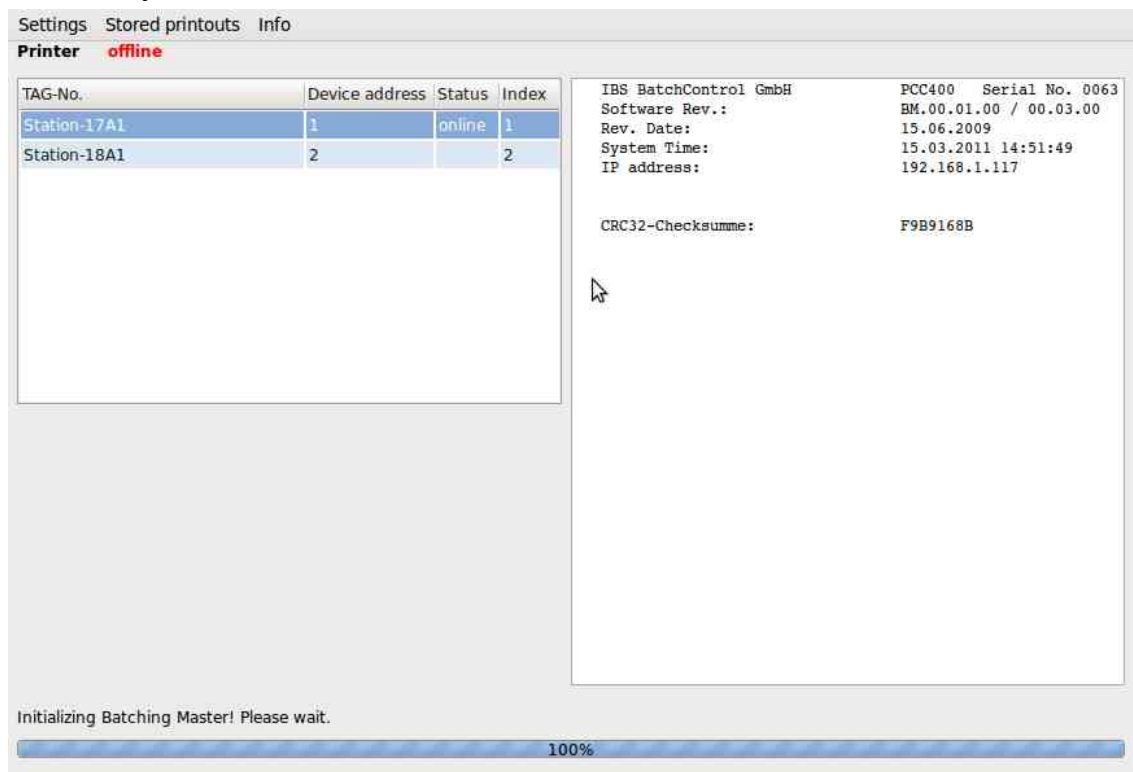
A supervisory system should be connect direct to the second interface from Batching Master. Optional for some applications (e. g. data base connection) a LAN interface could be used.

The supervisory system should be connect to the fourth serial interface COM4. The PCC 400 reads 14 Holding Register from Batching Master e. g. 120 Holding Register from Pipeline Master and makes them available as only read registers. This function is an option must be agreed with the distribution before ordering.

3 Starting up PCC-Batching Master

3.1 Printout at restart from PCC

If the PCC 400 is switched on, the operation system and the program will start automatically.



If the printer is connected correctly, a window appears with the message "printer online" and the following text is printed:

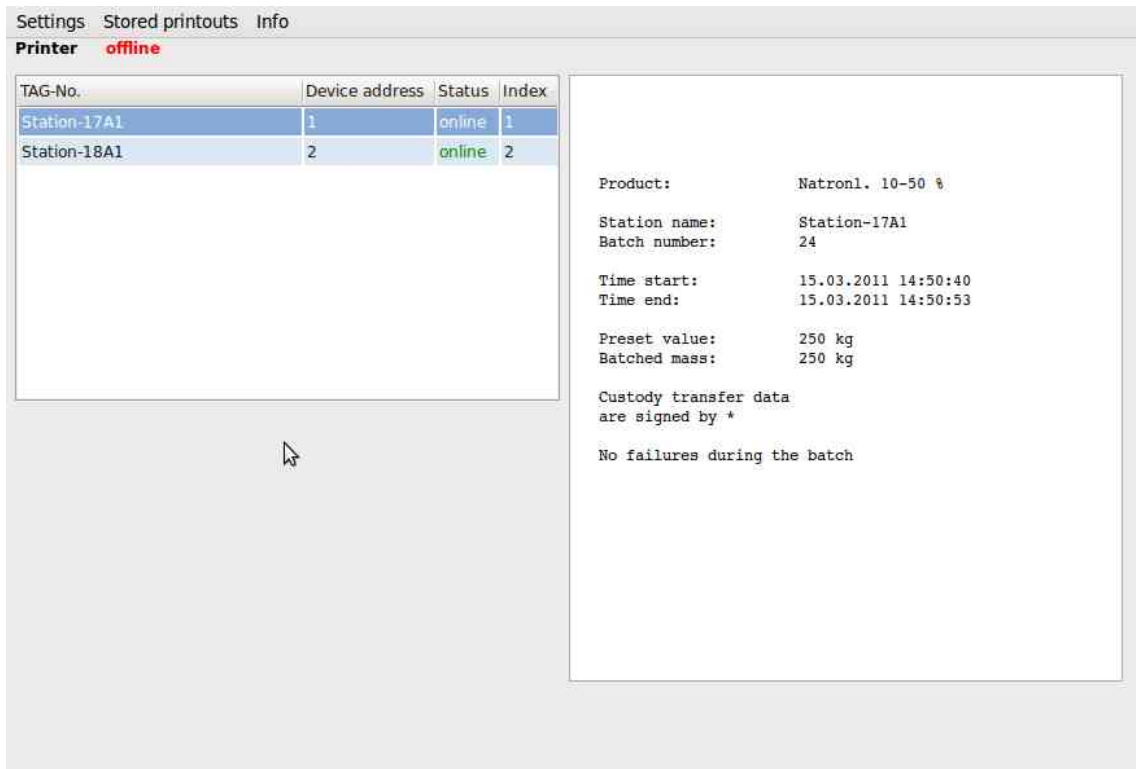
```
IBS BatchControl GmbH      PCC 400
Software Rev.:             BMxx.xx.xx / xx.xx.xx
System Time:               dd.mm.yyyy hh:mm:ss
IP:                        xxx.xxx.x.xxx

CRC32-Checksumme:        xxxxxxxxxxxx
```

The first part from the Software Revision is the custody transfer revision number, the second part is the not custody transfer revision number. The connected Batching Masters are listed in the left part from the window. If no Batching Master available, they must be logged (see section 3.3.1 TAG settings). The IP address is only used for network connection.

The PCC 400 is ready to use. All batches are printed and shown similar in the right part from the display window. If not, check in the install level from Batching Master the sub menu printer settings.

Starting up PCC-Batching Master



In the Batching Master function 4.11.1 the printout over PCC 400 is switched on.

The printer delay is set in function 4.11.2. This is used if the flow must be counted short time after the batch is stopped. The custody transfer data block is written after this delay time and the PCC 400 get the correct batch values from Batching Master.

The termination conditions of a batch, if a printer is not connected or active, are defined in function 4.11.3. If **no stop** is selected, a batch could be done without a active printer. If **no start** is selected a new batch could only be done with active printer.

If the connection to the Batching Master failed, a error message is displayed. The status "online" changed to "offline".

3.2 PCC 400 settings

You can define text blocks which are printed before and after the custody transfer printout. These texts can be written with a built in text editor. The program from PCC400 starts automatically. For editing the text blocks press the right mouse key in the list left side from the window at the Batching Master to edit. A window with following menus appears:

- edit text
- show documents from [station name]
- data base
-

After you choose **edit text** a password is required. The standard password at delivery is "password".

Password

Login Cancel

If a custody transfer dongle is active and the Batching Master is selected as custody transfer unit, only head and footing line and beginning and final text could be edited.

Header

Beginning text

Texts for Station-17A1

Print	Text	Metrological relevant
<input checked="" type="checkbox"/>	Station name:	
<input checked="" type="checkbox"/>	Batch number:	
<input checked="" type="checkbox"/>	Time start:	
<input checked="" type="checkbox"/>	Time end:	
<input checked="" type="checkbox"/>	Preset value:	
<input checked="" type="checkbox"/>	Batched mass:	<input checked="" type="checkbox"/>
<input type="checkbox"/>	Batched volume:	<input type="checkbox"/>
<input type="checkbox"/>	Batched std.-vol.:	<input type="checkbox"/>
<input type="checkbox"/>	Standard temp.:	<input type="checkbox"/>
<input type="checkbox"/>	Average density:	<input type="checkbox"/>
<input type="checkbox"/>	Average temp.:	<input type="checkbox"/>
<input type="checkbox"/>	Product:	
	Custody transfer data	
	are signed by *	
	can not be read!	
	No failures during the batch	
	Failures during the batch:	
	Checksum failure	
	Read circle failure number:	

Final text

Footer

Cancel Save

The check mark in the raw "Print" activates this line for print out. All values are stored in the data base and in the CSV file.

The printed texts are preset and appears in front of the printed line. This text could be translated into other languages. If the check mark "metrological relevant" is set, this value is printed within stars.

Starting up PCC-Batching Master

The printout format is as following:

```
Station name:          xxxxxxxx   Serial No.: xxxx
Batch number:   xx
Time start:      dd.mm.yyyy hh:mm:ss
Time end:       dd.mm.yyyy hh:mm:ss

Preset Value:          xxxx
Batched Mass:         *      xxxx*
Custody transfer data
are signed by *.
(possible error messages)
```

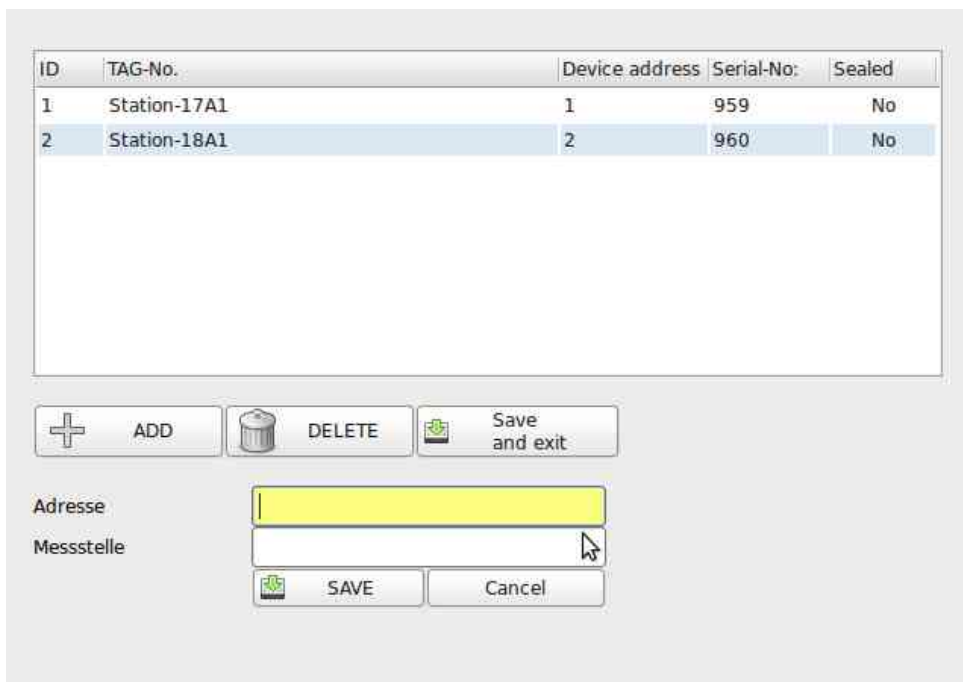
3.3 Global settings

The menu settings is in the upper line. Settings are only possible for not custody transfer data's, as long as the dongle is active.

A password is required before changes possible. The standard password at delivery is "password".

3.3.1 TAG settings

Menu **Settings** - TAG



The screenshot shows a software interface for TAG settings. It features a table with the following data:

ID	TAG-No.	Device address	Serial-No.	Sealed
1	Station-17A1	1	959	No
2	Station-18A1	2	960	No

Below the table are three buttons: **ADD** (with a plus icon), **DELETE** (with a trash icon), and **Save and exit** (with a floppy disk icon). Below these buttons are two input fields: **Adresse** (with a yellow highlight) and **Messstelle**. At the bottom are **SAVE** and **Cancel** buttons.

Click **ADD** and enter the addresses and names of the connected Batching Master.

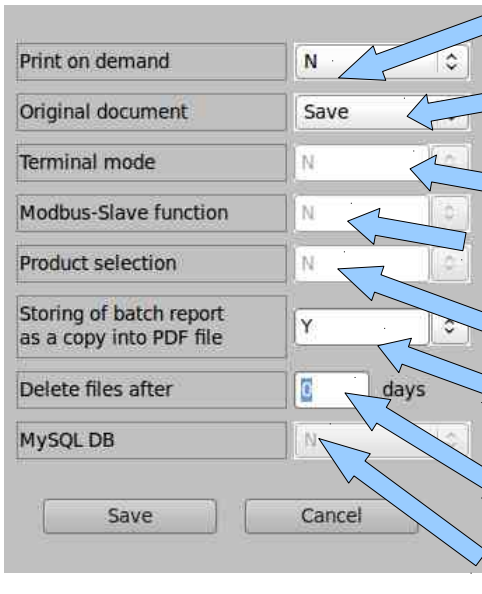
After marking the Batching Master as "sealed" unit and the dongle is active, no changes at custody transfer data's are possible.

As long the dongle is active, no new Batching Master could be market as custody transfer unit.

The serial numbers of the Batching Masters are discovered after closing the window and displayed next time.

To change the TAG-No. double click the line which you want to change.

3.3.2 System settings



Printout on demand: N

Original document: Save

Terminal mode: N

Modbus-Slave function: N

Product selection: N

Storing of batch report as a copy into PDF file: Y

Delete files after: 6 days

MySQL DB: N

Save Cancel

Printout on demand or always (setting N).
If there is always a printout, type in this box to select whether the original document or a copy is printed.

You can activate the terminal mode (option).

You can activate the Modbus slave function (option).

You can activate the option product selection.

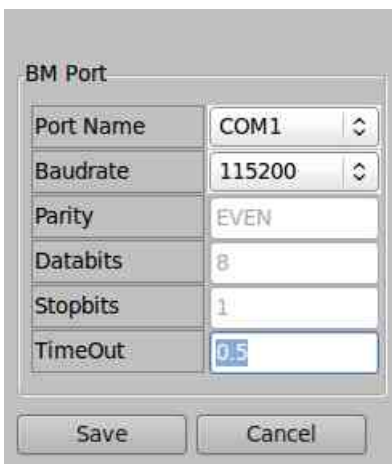
A copy form the batch report can be stored as a pdf file.

The data's will be deleted after the registered number of days.

The connection to an external MySQL data base can be activated.

The terminal modus, the Modbus slave function, product selection and the MySQL data base connection are options and must be agreed with the distribution before ordering.

3.3.3 Batching Master interface settings



BM Port

Port Name: COM1

Baudrate: 115200

Parity: EVEN

Databits: 8

Stopbits: 1

TimeOut: 0.5

Save Cancel

You configure the Batching Master interface in menu BM Port.

3.3.4 Printer settings

You configure the printer interface in menu Printer Port.

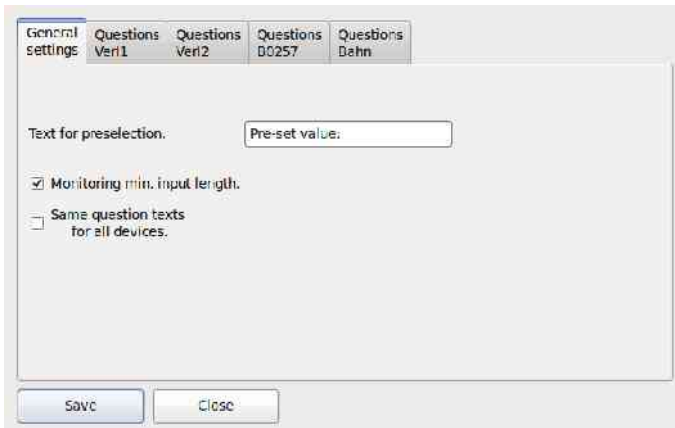
With line shift spaces at the left side from paper are specified.

3.3.5 Modbus slave settings (option)

You set the baud rate of the Modbus slave interface. All other settings are fixed.

Modbus Register	Description
0	Device Number LSW
1	Device Number MSW
2	Totaliser LSW
3	Totaliser MSW
4	Actual flow LSW
5	Actual flow MSW
6	Batched quantity LSW
7	Batched quantity MSW
8	Preselected Value LSW
9	Preselected Value MSW
10	Batch status
11	Analogue output (0 – 10000 equates 4 – 20 mA)
12	Batch number LSW
13	Batch number MSW

3.3.6 Terminal mode (Option)

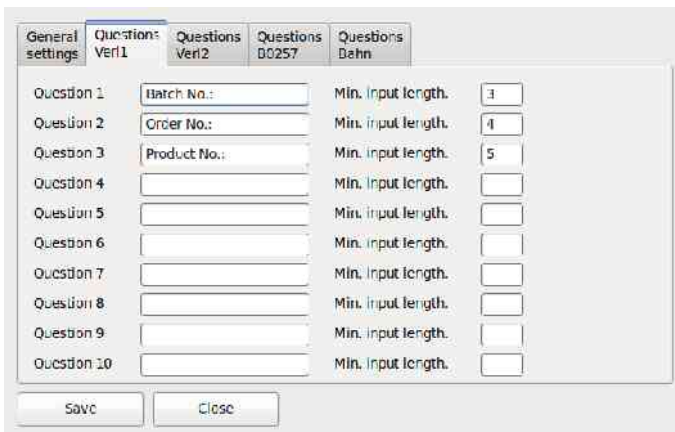


For using the terminal mode the Batching Master terminal mode must be active. Defined inputs must be done before the batch can be started.

In **General settings** the question text for the preselection is set.

Whether the minimum input length must be monitored, you can set.

If the questions for all units should be the same, select the second check box.



In the further riders each question text and the minimum length for the answer is defined.

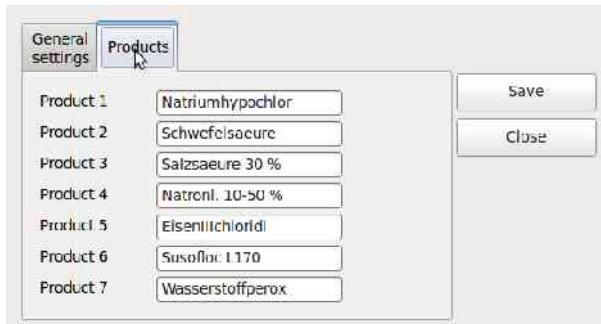
3.3.7 Product selection (option)



For product selection the Batching Master terminal function must be active. Additionally for each Batching Master a relay module is needed. The relay module is preconfigured by us and operates at the same RS485 bus as the Batching Master. The module 201 is firmly associated with the Batching

Master 1.

Starting up PCC-Batching Master



In order to start a batch, you press the key [RC] first. The text of request is indicated at the Batching Master. After entering a value between 1 to 7 (limited by the number of products), the selected product name is indicated for confirming. The confirmation text is indicated in the upper line, the in "Products" stored product is indicated in the lower line. After confirming with

[SET] the associated relay for this product is active and the batch can be started with [START].

3.3.8 Storing of the batch report as a copy into a PDF file

After you set this function to YES the storage place for the PDF files is requested.

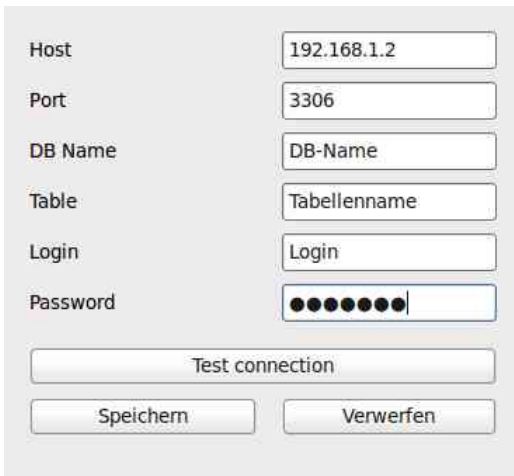


3.3.9 MySQL data base connection

A MySQL data base could be connected to the PCC 400 on demand.

Required settings: Menue System: MySQL DB to "Y"
 Menue Settings: select MySQL DB

following window opens:



Insert the settings from your MySQL data base. Please ask your competent administrator.

The data base name, login and password must be given from your MySQL administrator. The table name is set in this window from the PCC and automatically created in the MySQL data base.

3.3.10 Password



The image shows a dialog box for changing a password. It has three text input fields: 'Old password', 'New password', and 'Repeat new password'. Below these fields are two buttons: 'Save' and 'Cancel'.

You should change the standard password (password) to a private password. Please keep your password carefully, because we have no way to reset the password.

After entering the correct password you are able to make changes without afresh the password about five minutes. After this time the password must be entered again.

3.3.11 Language

You can set the language directly to German or English.

3.3.12 Logfile

A logfile can be written. Following selections are available:

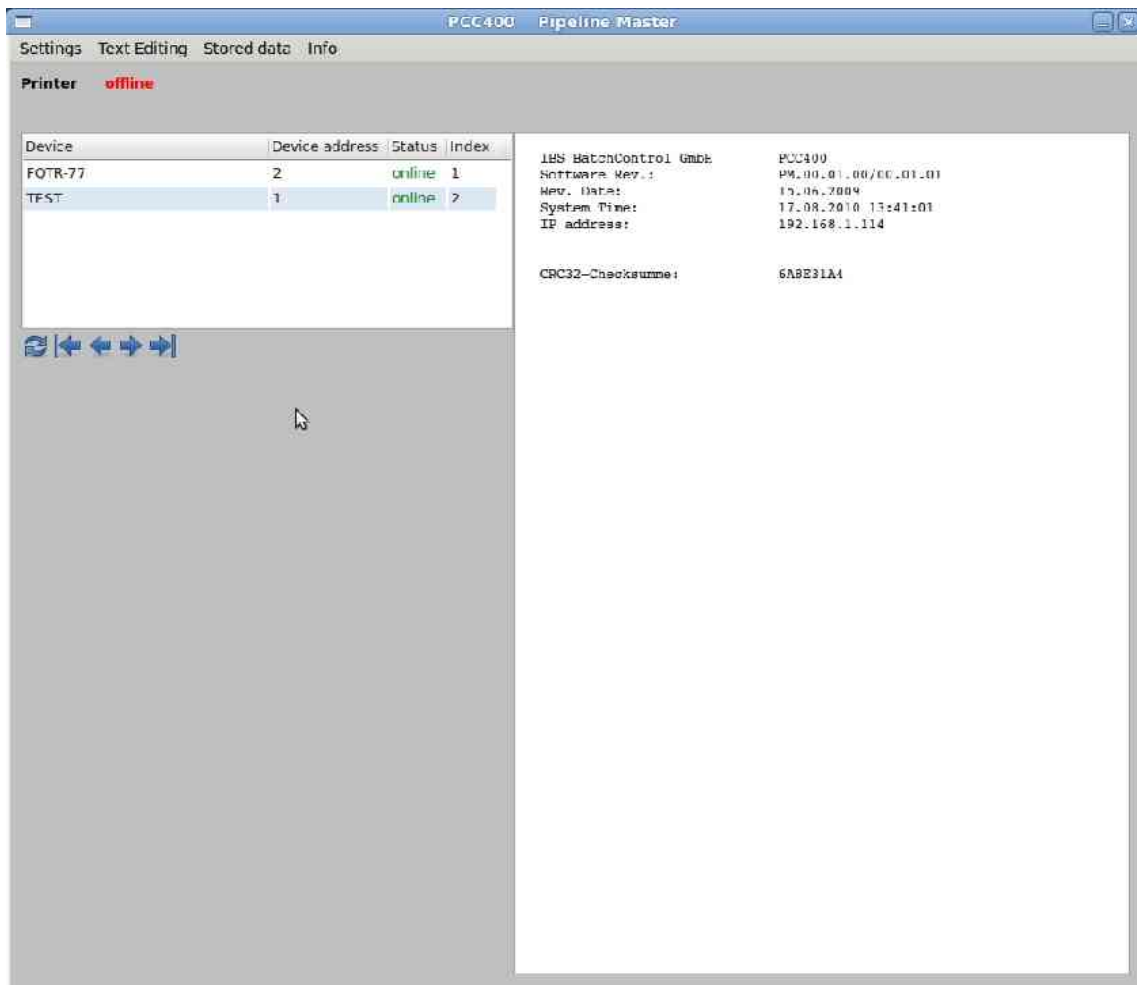
- write
- don't write
- delete

When delivered, no logfile is written. Please use this function only after consulting us.

4 Starting Up PCC-Pipeline Master

If the PCC 400 is switched on, the operation system and the program will start automatically.

4.1 Printout at restart from PCC



If the printer is connected correctly, a window appears with the message "printer online" and the following text is printed:

```
IBS BatchControl GmbH      PCC 400
Software Rev.:             PM.xx.xx.xx / xx.xx.xx
System Time:              dd.mm.yyyy hh:mm:ss
IP:                       xxx.xxx.x.xxx

CRC32-Checksumme:        xxxxxxxxxxxx
```

The first part from the Software Revision is the custody transfer revision number, the second part is the not custody transfer revision number. The connected Pipeline Masters are listed in the left part from the window. If no Pipeline Master available, they must be logged (see section 3.3.1 TAG settings). The IP address is only used for network connection.

The PCC 400 is ready to use. All documents are printed and shown similar in the right part from the display window. If not, check in the install level from Batching Master the sub menu printer settings.

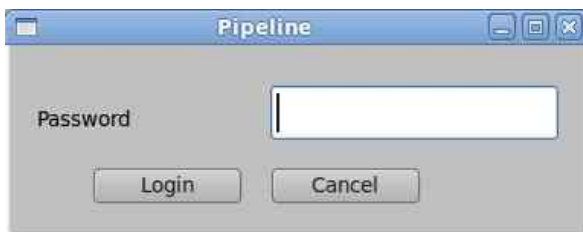
If the connection to the Pipeline Master failed, a error message is displayed. The status “online” changed to “offline”.

4.2 PCC 400 Settings

You can define text blocks which are printed before and after the custody transfer printout. These textes can be written with a built in text editor. The program from PCC400 starts automatically. For editing the text blocks press the right mouse key in the list left side from the window at the Batching Master to edit. A window with following menus appears:

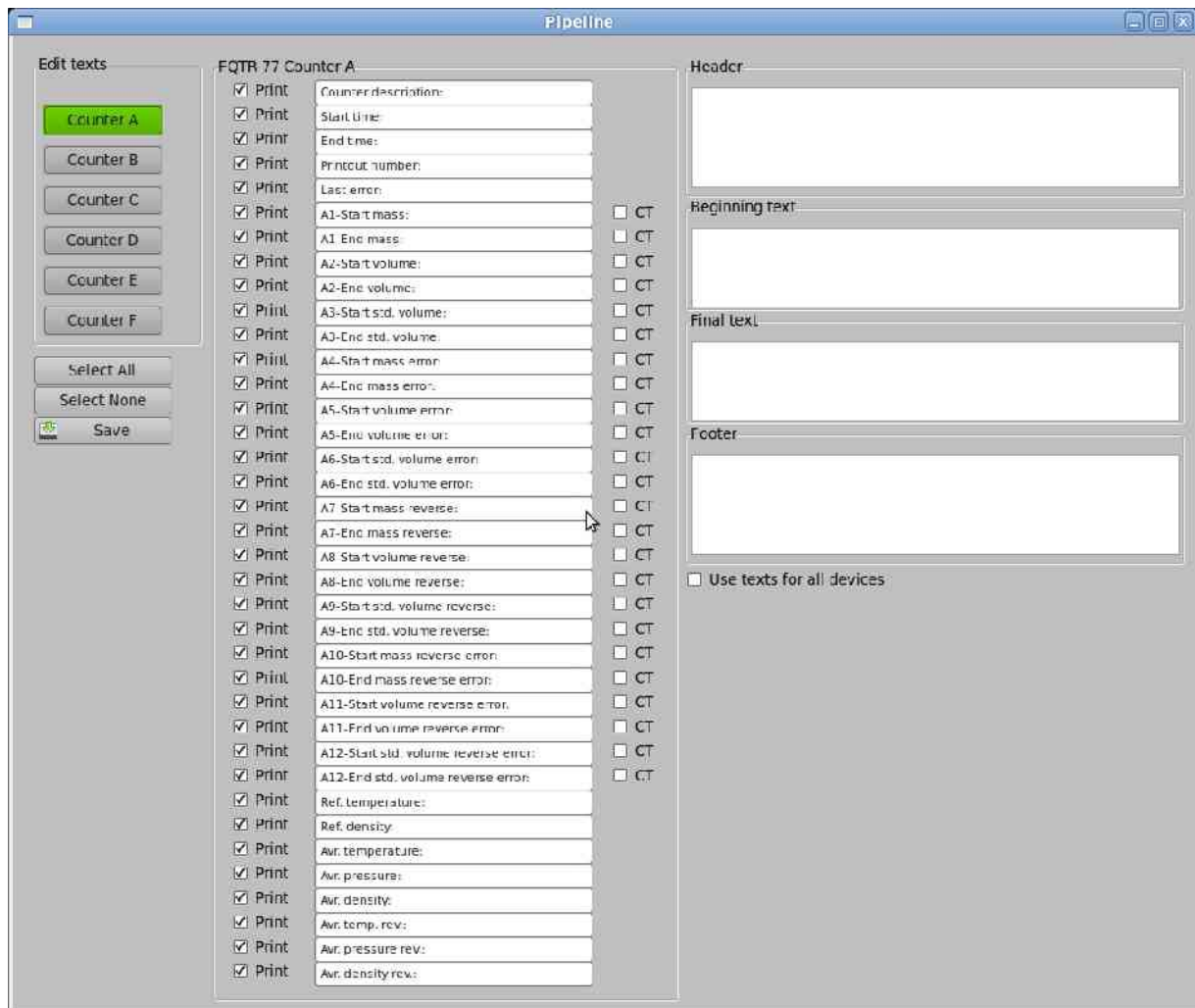
- edit text
- show documents from [station name]
- data base

After you choose “edit text” a password is required. The standard password at delivery is “password”.



If a custody transfer dongle is active and the Batching Master is selected as custody transfer unit, only head and footing line and beginning and final text could be edited.

Starting Up PCC-Pipeline Master



The check mark in front of "Print" activates this line for print out. The data base stores all data's. Not used or required data's will not be stored and this field will be left blank.

The printed texts are preset and appears in front of the printed line. This text could be translated into other languages. If the check mark "custody transfer relevant" is set, this value is printed within stars.

The printout format is as following:

```

TAG no.:                xxxxxxxx

Counter name:           xxxxxxxxx
Start time:             dd.mm.yyyy hh:mm:ss
Ende time:              dd.mm.yyyy hh:mm:ss
Printout number:        xx
Last error:             no error
Mass:                   *      xxxx*
...

```

Custody transfer data
are signed by *.
(possible error messages)

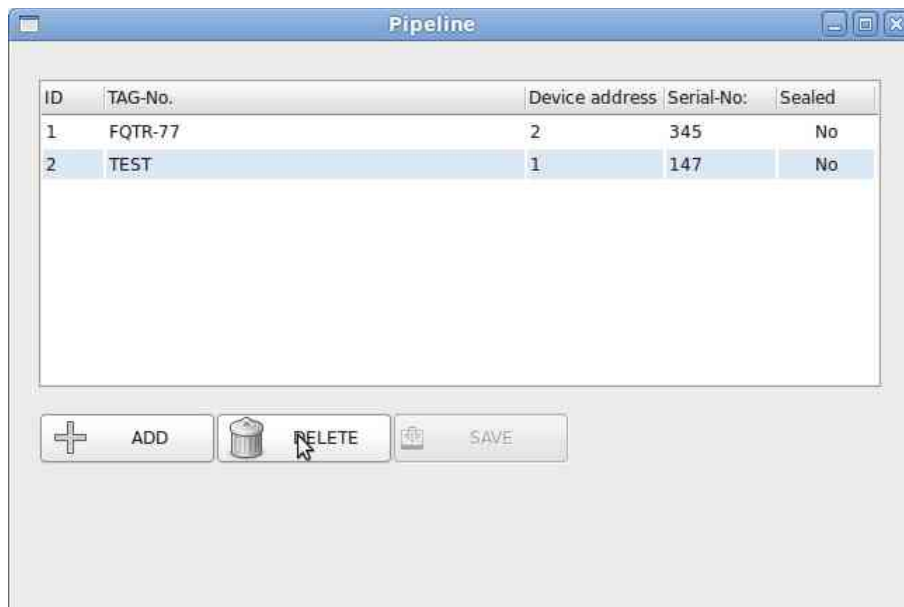
4.3 Global Settings

The menu settings is in the upper line. Settings are only possible for not custody transfer data's, as long as the dongle is active. .

A password is required before changes possible. The standard password at delivery is "password".

4.3.1 TAG settings

In the menu **Settings** – **TAG** you set the TAG-No. and the device addresses from the connected Pipeline Master.



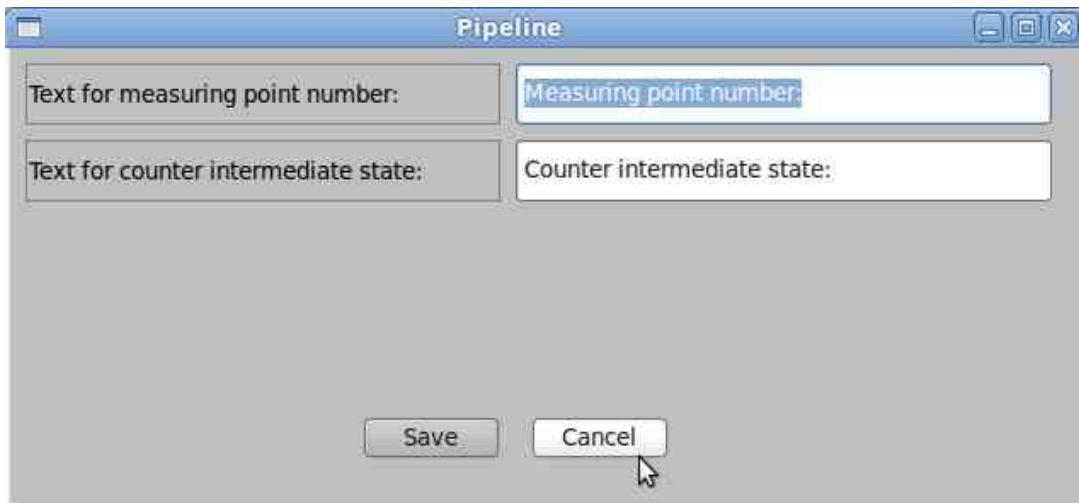
The input fields for the device address and the TAG-No. is displayed after pressing the button **ADD**.

Starting Up PCC-Pipeline Master

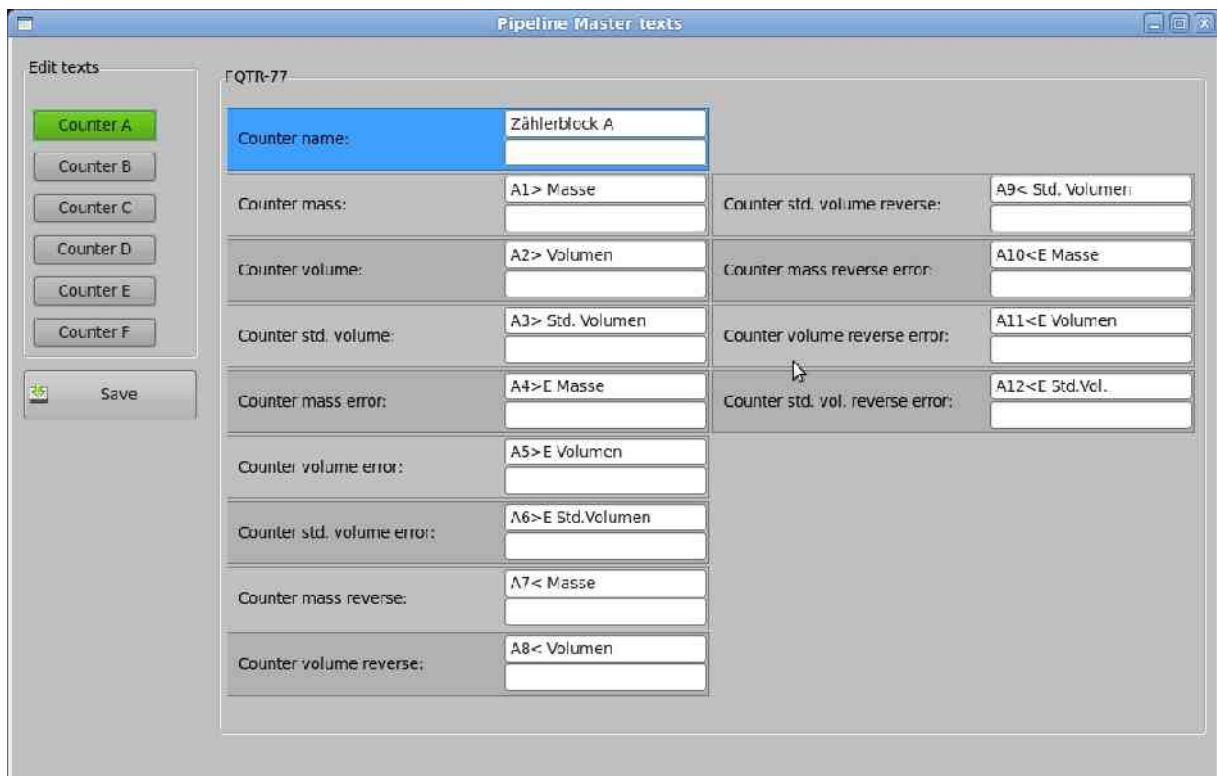
After the field “sealed” is “yes” and the dongle is plugged in, no changes on metrological data are possible.

As long as the dongle is plugged in, no new Pipeline Master can market as custody transfer.

The text, which is to print in front of the TAG number and of the counter intermediate result can be edited in the following window. So it is possible to write other words for TAG number or counter intermediate result.



The itemised counter names can be edit in the following window. In the picture you will see the factory set names. For custom names the Pipeline Master must be set to “modbus register” in the counter menu “text display” A...F29.



4.3.2 System Settings

The printout is done every time or only after selection from the menu. If a printout is done every time, please select “as original” or “as copy” for this printout.

The terminal mode and the connection to a MySQL data base are options and must be agreed before the order with the distribution.

Define, whether the printout should be stored as PDF file.

The stored data in the internal data base and the CSV files will be deleted after the registered numbers of days. This setting is controlled by the verification officer. With the setting 0 the data are not deleted.

The stored data in the internal data base and the CSV files will be deleted after the registered numbers of days. This setting is controlled by the verification officer. With the setting 0 the data are not deleted.

4.3.3 Pipeline Master Interface Settings

You configure the Pipeline Master interface in menu BM Port.

4.3.4 Printer Settings

You configure the printer interface in menu Printer Port.

4.3.5 Modbus slave settings (option)



You set the baud rate of the Modbus slave interface. All other settings are fixed.

4.3.6 Modbus slave mapping (option)



PCC Register	PM Register
1	1
2	2
3	3
4	4
5	5
6	5001
7	5002
8	5003
9	5004
10	5005
11	5006
12	5007
13	5008
14	5009
15	5104
16	5105
17	5106
18	5107
19	5108

You can read 120 modbus registers from the connected Pipeline Master direct from the supervisory system e. g. DCS. The mapping is done in the shown table. The Pipeline Master register written in the input field “ADD PM register” is written to the next free address from the mapping table.

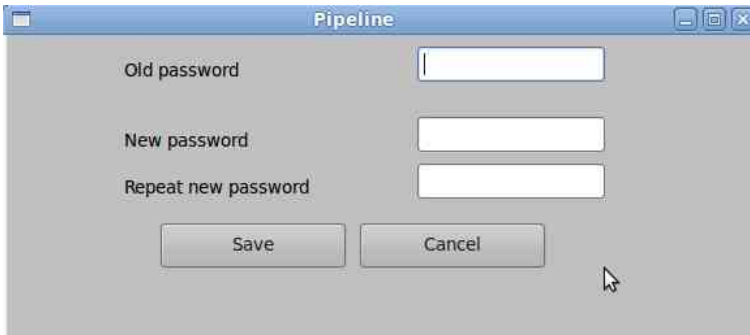
All these registers can be read from the supervisory system.

4.3.7 Write PDF files

After setting to YES the storage place for PDF files is required. It's possible to use USB sticks.



4.3.8 Password

A screenshot of a dialog box titled "Pipeline". It contains three text input fields labeled "Old password", "New password", and "Repeat new password". Below the fields are two buttons: "Save" and "Cancel". A mouse cursor is visible over the "Cancel" button.

You should change the standard password (pas) to a private password. Please keep your password carefully, because we have no way to reset the password.

4.3.9

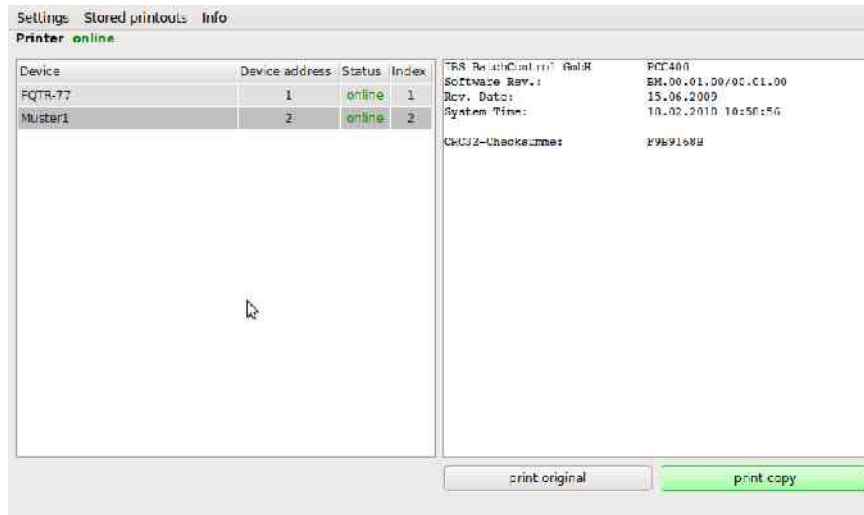
Insert the settings from your MySQL data base. Please ask your competent administrator. The data base name, login and password must be given from your MySQL administrator. The table name is set in this window from the PCC and automatically created in the MySQL data base.

4.3.10 Language

You can set the language directly to German or English.

5 Handling PCC Batching Master

Following window appears after launching the program:

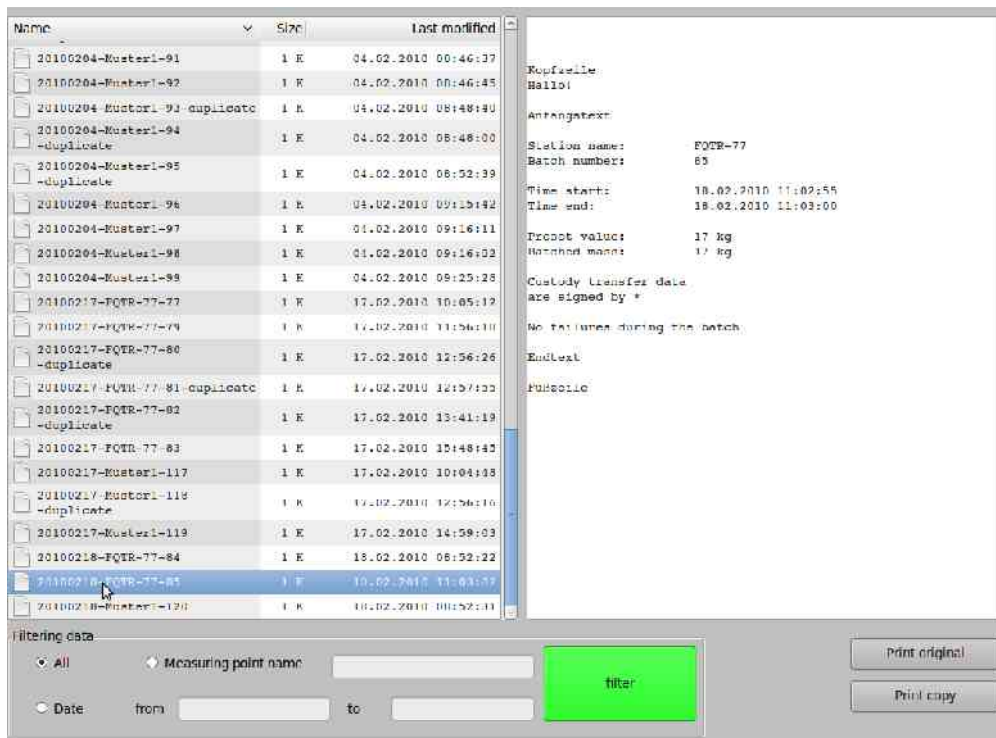


At present, the printer is online and two Batching Master are found.

5.1 Stored Printouts

The menu **Stored printouts** opens a new window with the selections **show printouts** and **data base**.

5.1.1 Show printouts



The file name is build automatically using date, station name and batch number:

e. g. 20090430-NAME-480-duplicate

Select the desired batch using the mouse.

The document content is shown in the right window. The document can be printed. With the button **Print original** a original batch document is printed, with the button **print copy** a copy from this document is printed. In the copy a “copy” is printed in the first line. If the original is printed, the file is indicated as duplicate and *copy* is set in the first line. The original document could not be printed for a second time. For finding the desired documentation faster, it is possible to filter the data by sampling the name and data.

5.1.2 Data base

In this selections you can search for TAG number or date. After this you can export the selected batches or open this as a Calc table.

Station name:	Batch number	Time start:	Time end:	Preset value:	Batched quantity:	Batched volume:	Batched std. vol.:	Standard temp.:	Average density:	Average
TEST	318	06.12.2010 15:04:00	06.12.2010 15:04:09	15,9 kg	16,3 kg					
FOCR 77	91	06.12.2010 15:03:59	06.12.2010 15:04:11	14,8 kg	14,9 kg					
TEST	319	06.12.2010 15:12:55	06.12.2010 15:13:04	15,9 kg	16,3 kg					
FOCR-77	92	06.12.2010 15:12:55	06.12.2010 15:13:07	14,8 kg	14,9 kg					
FOCR 77	93	06.12.2010 15:15:43	06.12.2010 15:15:58	25,0 kg	25,1 kg					
TEST	320	06.12.2010 15:15:41	06.12.2010 15:16:02	45,0 kg	45,3 kg					
TEST	321	06.12.2010 15:31:55	06.12.2010 15:32:04	14,9 kg	15,5 kg					
FOCR-77	94	06.12.2010 15:31:55	06.12.2010 15:32:06	12,4 kg	12,5 kg					
TEST	322	06.12.2010 15:34:05	06.12.2010 15:34:10	3,5 kg	4,0 kg					
FOCR 77	95	06.12.2010 15:34:05	06.12.2010 15:34:12	2,0 kg	2,7 kg					
FOCR-77	96	06.12.2010 15:50:06	06.12.2010 15:50:14	6,2 kg	6,3 kg					
TEST	323	06.12.2010 15:50:15	06.12.2010 15:50:20	5,2 kg	5,7 kg					
FOCR 77	97	07.12.2010 07:41:21	07.12.2010 07:41:29	6,2 kg	6,3 kg					
Verf2	104	07.12.2010 07:41:32	07.12.2010 07:41:37	5,2 kg	5,7 kg					
Verf2	105	07.12.2010 07:46:21	07.12.2010 07:46:26	5,2 kg	5,7 kg					
Verf1	98	07.12.2010 07:46:19	07.12.2010 07:46:27	6,2 kg	6,3 kg					
Verf2	106	07.12.2010 07:46:31	07.12.2010 07:46:36	5,2 kg	5,7 kg					
Verf1	99	07.12.2010 07:52:31	07.12.2010 07:52:39	6,2 kg	6,3 kg					
Verf1	100	07.12.2010 07:56:04	07.12.2010 07:56:13	7,7 kg	7,6 kg					
Verf2	101	07.12.2010 07:56:04	07.12.2010 07:56:14	17,7 kg	18,2 kg					
Verf1	102	07.12.2010 07:59:42	07.12.2010 07:59:51	7,7 kg	7,8 kg					

Filtering data

All
 Station name: Use filter
Export to CSV file
CSV file open

Date: from to

With the mouse you can select a batch and with a double-click the window **Stored documents** opens and the document can be printed directly.

5.2 Info menu

5.2.1 PCC 400 Info

Informations of software revision and checksum



IBS-BatchControl GmbH
Marie-Curie-Str. 8
50170 Kerpen
Germany

www.ibs-batchcontrol.de
service@ibs-batchcontrol.de
Tel.: +49 2273 6037 - 0

Software:	PCC400
Software Rev.:	BM.00.01.00/00.03.00
Rev. Date:	15.06.2009

Serial No.:	0063
-------------	------

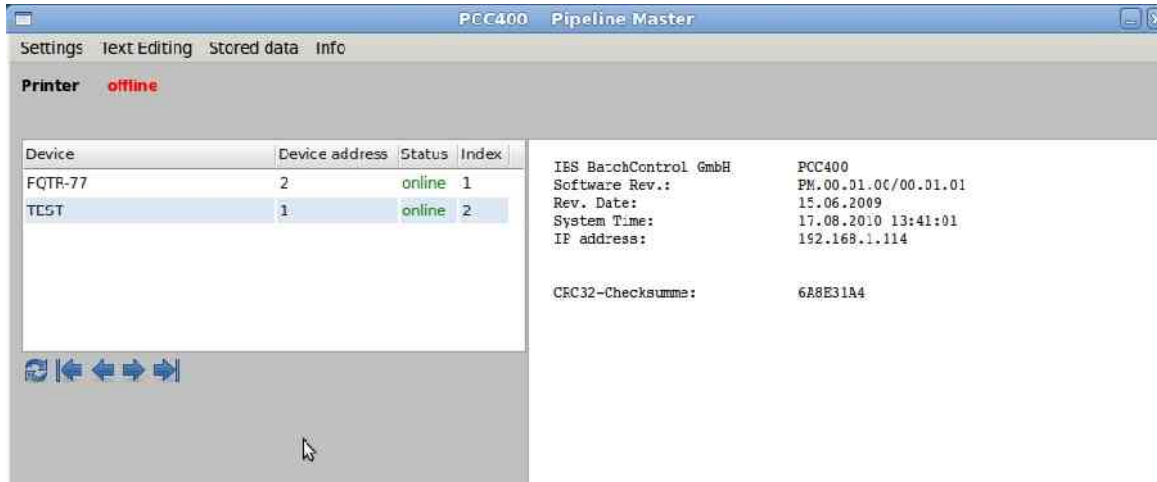
CRC32-Checksumme:	F9B9168B
-------------------	----------

5.2.2 Print BM Info

A list with PCC 400 software version and all connected Batching Master including the software version and checksum (decimal and HEX) over all metrological relevant data is printed.

6 Handling PCC Pipeline Master

Following window appears after launching the program:

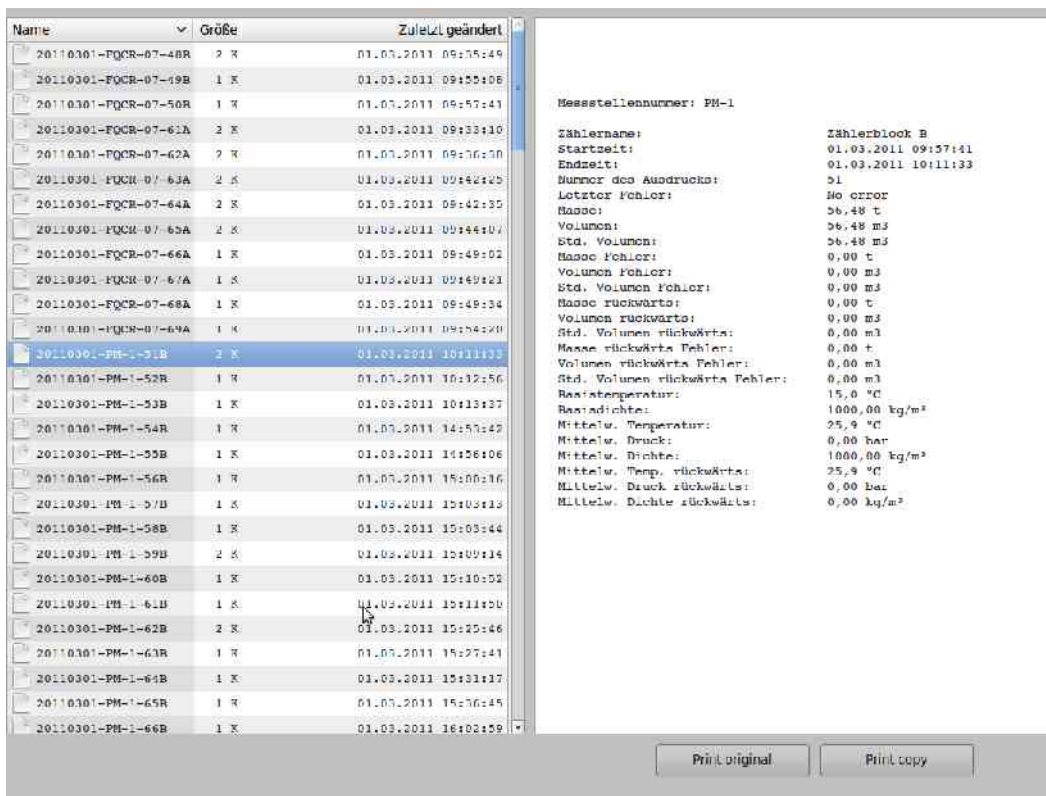


At present, the printer is online and two Batching Master are found.

6.1 Stored data

The menu “Stored data” opens a new window with the selections “show printouts” and “data base”.

6.1.1 Show printouts



Handling PCC Pipeline Master

The file name is build automatically using date, station name and batch number:

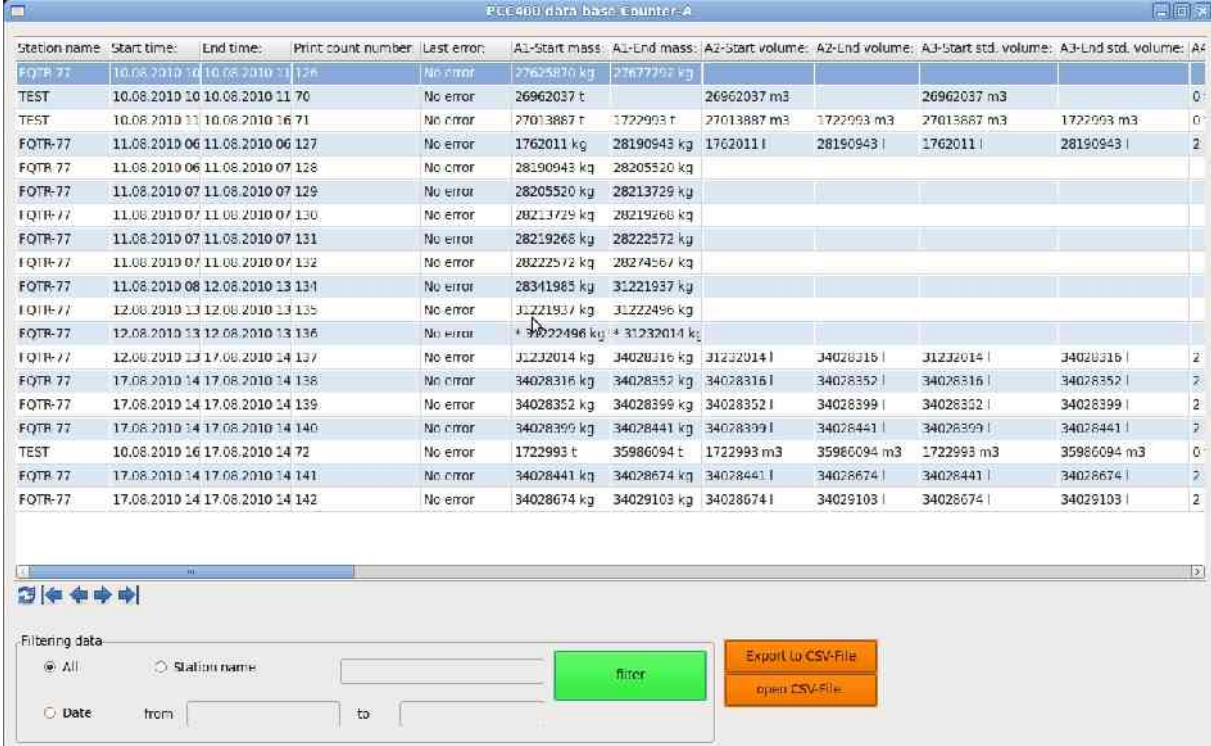
e. g. 20090430-NAME-480-duplicate

Select the desired batch using the mouse.

The document content is shown in the right window. The document can be printed. With the button **Print original** a original batch document is printed, with the button **print copy** a copy from this document is printed. In the copy a “copy” is printed in the first line. If the original is printed, the file is indicated as duplicate and *copy* is set in the first line. The original document could not be printed for a second time. For finding the desired documentation faster, it is possible to filter the data by sampling the name and data.

6.1.2 Data base

In the menu **data in data base** (counter A to F) you can search for TAG number or date. After this you can export the selected batches or open this as a Calc table.



Station name	Start time:	End time:	Print count number	Last error:	A1-Start mass:	A1-End mass:	A2-Start volume:	A2-End volume:	A3-Start std. volume:	A3-End std. volume:	A4
FQTR-77	10.08.2010 10	10.08.2010 11	126	No error	27625870 kg	27677297 kg					
TEST	10.08.2010 10	10.08.2010 11	70	No error	26962037 t		26962037 m3		26962037 m3		0
TEST	10.08.2010 11	10.08.2010 16	71	No error	27013887 t	1722993 t	27013887 m3	1722993 m3	27013887 m3	1722993 m3	0
FQTR-77	11.08.2010 06	11.08.2010 06	127	No error	1762011 kg	28190943 kg	1762011 l	28190943 l	1762011 l	28190943 l	2
FQTR-77	11.08.2010 06	11.08.2010 07	128	No error	28205520 kg	28205520 kg					
FQTR-77	11.08.2010 07	11.08.2010 07	129	No error	28205520 kg	28213729 kg					
FQTR-77	11.08.2010 07	11.08.2010 07	130	No error	28213729 kg	28219266 kg					
FQTR-77	11.08.2010 07	11.08.2010 07	131	No error	28219266 kg	28222572 kg					
FQTR-77	11.08.2010 07	11.08.2010 07	132	No error	28222572 kg	28274567 kg					
FQTR-77	11.08.2010 08	12.08.2010 13	134	No error	28341985 kg	31221937 kg					
FQTR-77	12.08.2010 13	12.08.2010 13	135	No error	31221937 kg	31222496 kg					
FQTR-77	12.08.2010 13	12.08.2010 13	136	No error	31222496 kg	31232014 kg					
FQTR-77	12.08.2010 13	17.08.2010 14	137	No error	31232014 kg	34028316 kg	31232014 l	34028316 l	31232014 l	34028316 l	2
FQTR-77	17.08.2010 14	17.08.2010 14	138	No error	34028316 kg	34028352 kg	34028316 l	34028352 l	34028316 l	34028352 l	2
FQTR-77	17.08.2010 14	17.08.2010 14	139	No error	34028352 kg	34028399 kg	34028352 l	34028399 l	34028352 l	34028399 l	2
FQTR-77	17.08.2010 14	17.08.2010 14	140	No error	34028399 kg	34028441 kg	34028399 l	34028441 l	34028399 l	34028441 l	2
TEST	10.08.2010 16	17.08.2010 14	72	No error	1722993 t	35960094 t	1722993 m3	35960094 m3	1722993 m3	35960094 m3	0
FQTR-77	17.08.2010 14	17.08.2010 14	141	No error	34028441 kg	34028674 kg	34028441 l	34028674 l	34028441 l	34028674 l	2
FQTR-77	17.08.2010 14	17.08.2010 14	142	No error	34028674 kg	34029103 kg	34028674 l	34029103 l	34028674 l	34029103 l	2

With the mouse you can select a batch and with a double-click the window **Stored documents** opens and the document can be printed directly.

6.2 Info menu

6.2.1 PCC 400 Info

Informations of software revision and checksum



6.2.2 Print PM Info

A list with PCC 400 software version and all connected Pipeline Master including the software version and checksum (decimal and HEX) over all metrological relevant data is printed.

7 Declaration of Conformity



DECLARATION OF CONFORMITY

According to European Directive
EMC 2004/108/EC & LVD 2006/95/EC


CATEGORY:	<i>Motherboard</i>
Model NO:	<i>MS-9A19</i>
APPLICANT:	<i>MICRO-STAR INT'L CO., LTD</i>
ADDRESS:	<i>NO.69, LI-DE ST, JUNG-HE CITY, TAIPEI HSIEN, TAIWAN</i>
TEL:	<i>886-2-3234-5599</i>
FAX:	<i>886-2-2227-1644</i>

For the evaluation regarding the radio spectrum, electromagnetic compatibility and protection requirements for health and safety the following standards were applied:

LVD(safety) : EN 60950-1: 2006
EMC: EN 55022: 2006+A1: 2007, ClassB
EN 55024: 1998+A1: 2001+A2: 2003
EN 61000-3-2 edition2: 2006
EN 61000-3-3: 1995+A1: 2001+A2: 2005

We hereby declare that the equipment bearing the equipment name and model number specified above was tested conforming to the above regulations. Under the most accurate measurement standards possible and all the essential steps have been taken and are in force to assure that production units of the same equipment will continue to comply with the Commission's requirements.

MICRO-STAR



Christian Hofmann

**EMV Dept.
MSI Technology GmbH**

4.12.2007

Date

MICRO-STAR INT'CO., LTD
TEL: 886-2-3234-5599
FAX: 886-2-2227-1644

Year to begin affixing CE mark: 2009
ISSUED DATE: 2009/12/02